

Israel's Acreage Release

RISC is an independent oil and gas consultancy firm, with a team of highly experienced geoscientists and engineers who can offer an assessment of the prospectivity of Israel's 2016 acreage release.

In August 2016, Israel's Ministry of Energy (MIEWR) announced the release of 24 Levant Basin blocks in Israel's first bid round. The blocks lie in an area where there have been giant gas discoveries in the last 10 years (Tamar and Leviathan).

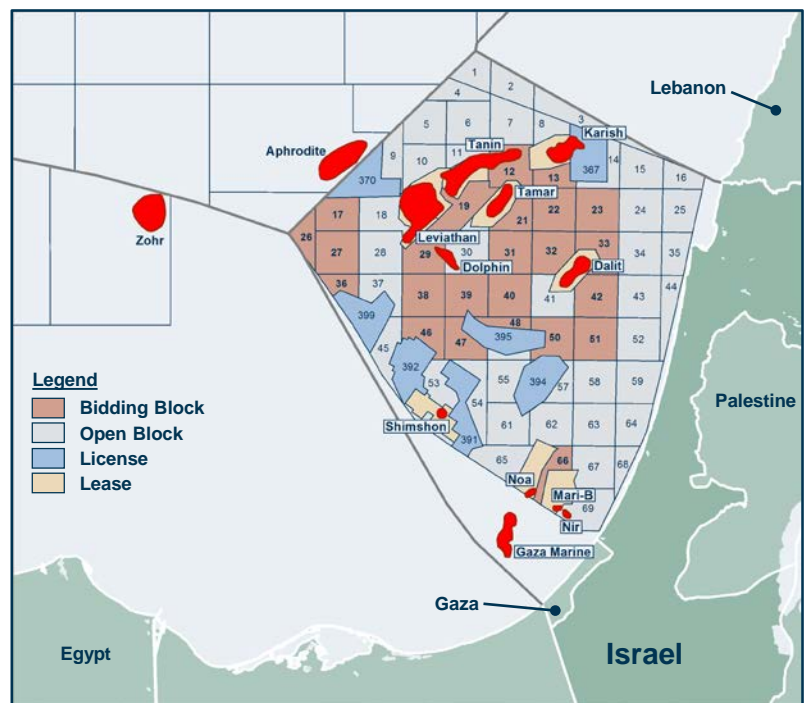
RISC has worked on these multi-TCF discoveries in the Levant Basin, including the Mari-B and Tamar fields in Israel, and the Zohr discovery offshore Egypt. With this experience, RISC is well positioned to provide insight and guidance to parties interested in Israel's licensing round for which bids close in March 2017.

Data packages will be made available, including speculative seismic data and well data. MIEWR will be providing information on the legal and fiscal terms.

RISC has conducted many basin prospectivity studies with the view to high-grading the most prospective blocks. We use play based analysis and employ renowned seismic sequence stratigraphers, basin modellers and structural geologists to provide a regionally consistent and geologically integrated prospectivity interpretation.

We strive to understand our clients' business goals, enabling us to work seamlessly with our clients' technical, commercial and management teams.

We work with our clients to understand their drivers and allow them to make investment *decisions with confidence.*



Contact us

Gavin Ward
Partner - General Manager (UK)

Ian Cockerill
Head of Geoscience (AU)

+44 20 3356 2960
gavin.ward@riscadvisory.com
+61 8 9420 6624
ian.cockerill@riscadvisory.com

www.riscadvisory.com

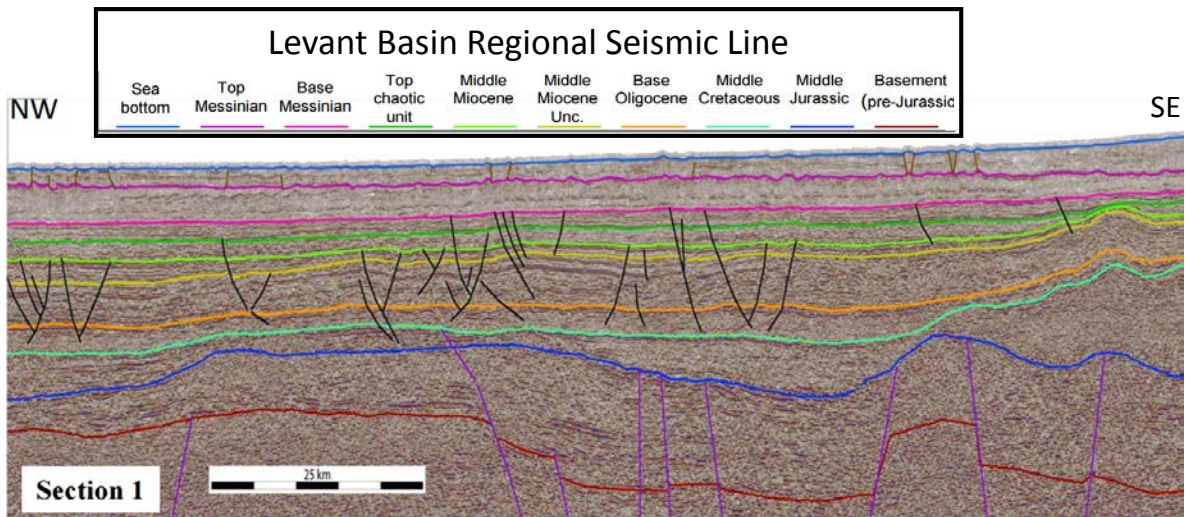
RISC can also provide success case economics based on notional developments and value the blocks on a risked basis to underpin bidding strategies.

RISC's Levant Basin Experience

Israel: Interpretation, mapping, peer review and resource assessment of Noa, Mari-B, Dalit, and Tamar.

Gaza: Peer review and resource assessment of Gaza Marine-1 & -2.

Egypt: Peer review and resource assessment of deepwater Zohr field and over twenty fields on Nile delta.



RISC's Basin Analysis Experience

- Hydrocarbon prospectivity review of the offshore Rakhine, Moattama and Andaman Sea Regions, Myanmar in 2016, including structural modelling, sequence stratigraphic interpretation and play based analysis.
- The Hydrocarbon Prospectivity of Myanmar, multi-client study, onshore and offshore Myanmar, 2013.
- Sequence stratigraphic architecture and reservoir characterisation of Slope Depositional Systems of NW Sabah Basin Block SWR offshore Sabah, 2014.
- Reservoir fairway study to provide reservoir characterisation framework for prospects, leads and plays, Ravva Area, Krishna-Godavari, offshore India, 2012.
- Farm-in support including review of G&G and commercial data, and preparation of a conceptual development plan for exploration block, Cauvery, offshore India, 2008.
- Predictive geologic model including sequence stratigraphy, core sedimentology, depositional facies and seismic geomorphology, Krishna-Godavari, offshore India, 2012.
- Review of the petroleum systems, exploration potential and prospectivity of six blocks offered in NELP-VI (onshore and offshore), Cauvery, Palar and Cambay, India, 2006.